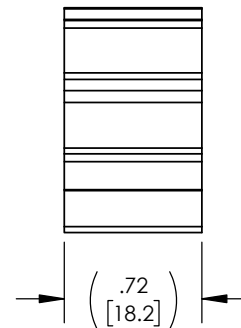
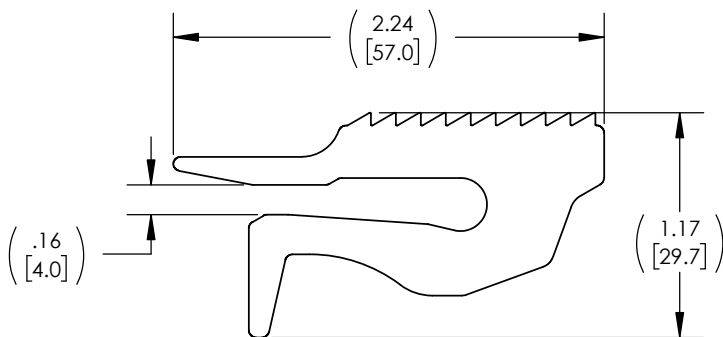
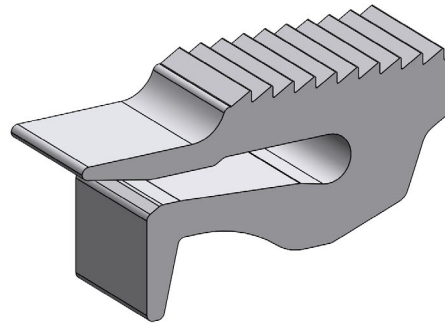


## CAM CLAW, CFRP

PART NUMBER	DESCRIPTION
2000854	CAM CLAW, CFRP



MATERIAL	ALUMINUM
FINISH	MILL

## CAM CLAW, CFRP

PACKAGING INFORMATION				
PART NUMBER	DESCRIPTION	PALLET QTY.	UNIT QTY.	PALLET WEIGHT
2000854-PCK	CAM CLAW, CFRP 20-PACK INST.	18,000	20	1,563 LBS

