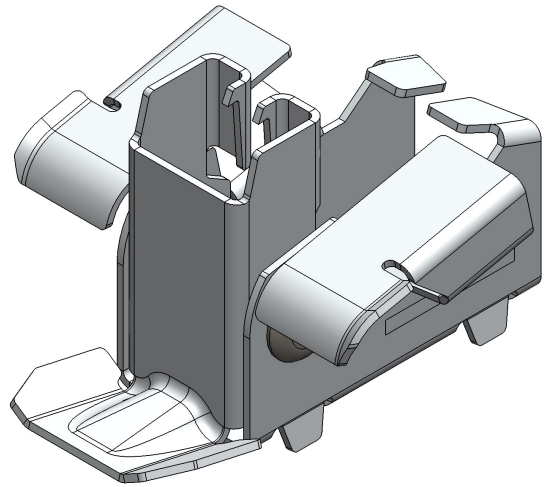
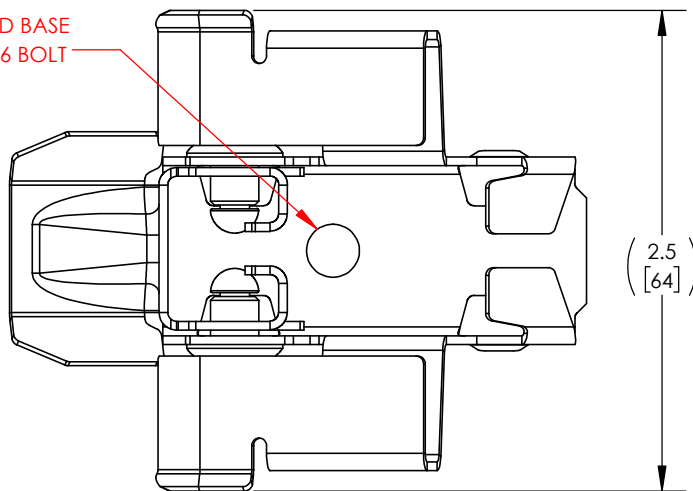


## CAM, 10D, CFRP

PART NUMBER	DESCRIPTION
5000630	CAM, 10D, CFRP

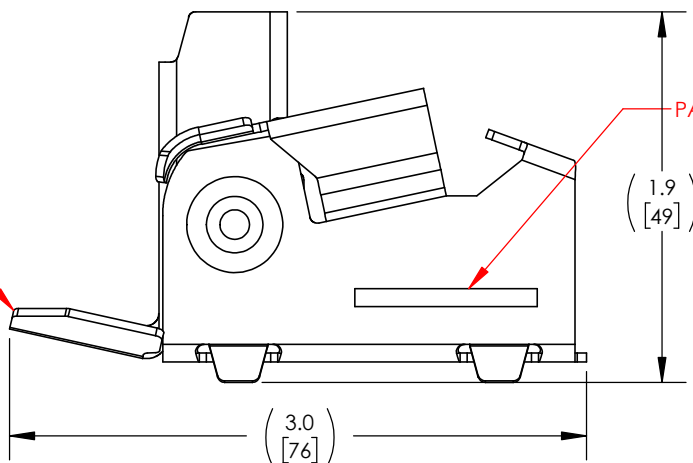


MODULE CONNECTOR AND BASE  
ATTACHMENT HOLE FOR M6 BOLT

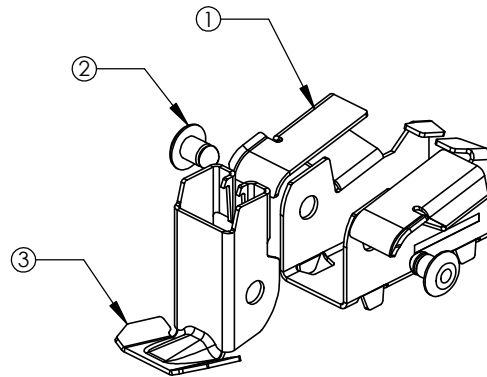


MODULE SEAT

PART NUMBER AND REVISION CODE

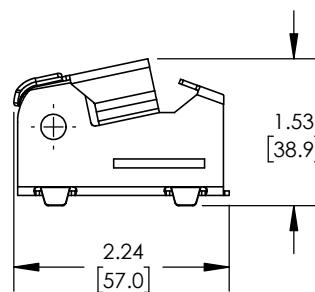
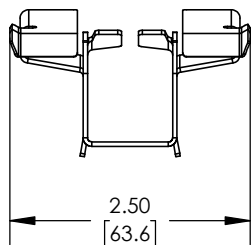


## CAM, 10D, CFRP

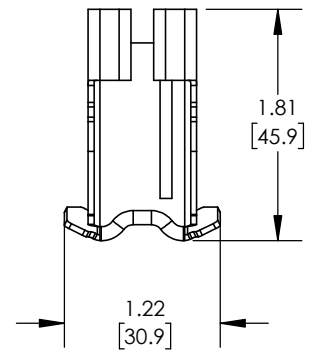
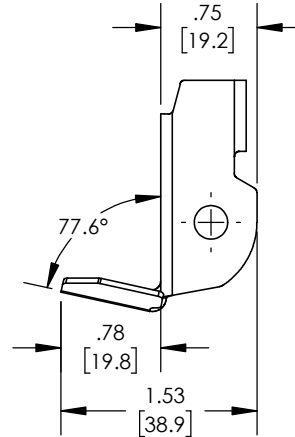


ITEM NO.	DESCRIPTION
1	CAM BRKT, 10D, CFRP
2	CAM SEAT, CFRP
3	RIVET, 1/4"x .25"L, .020-.125 GRIP, ST

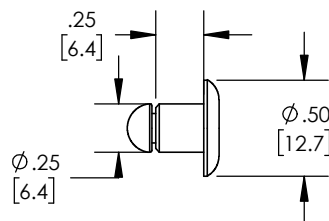
1) CAM BRKT, 10D, CFRP



2) CAM SEAT, CFRP



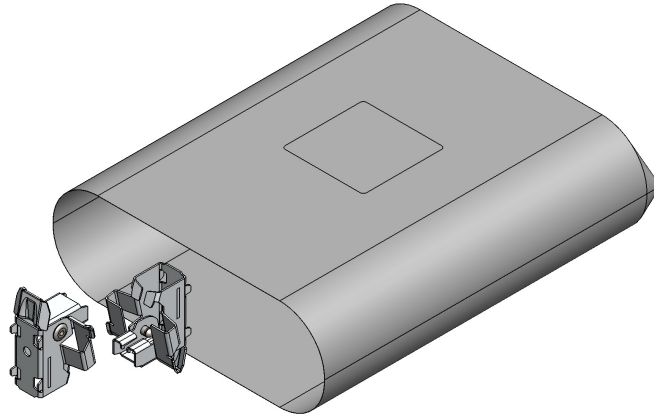
3) RIVET, 1/4"x .25L, .020-.125 GRIP, ST



MATERIAL	STEEL
FINISH	ZINC-ALUMINUM-MAGNESIUM, MILL, ZINC

## CAM, 10D, CFRP

PACKAGING INFORMATION				
PART NUMBER	DESCRIPTION	BAG QTY.	UNIT QTY.	BAG WEIGHT
5000630-PCK-A	CAM, 10D, CFRP, 20-PACK INST.	1	20	3.79 LBS



PACKAGING INFORMATION				
PART NUMBER	DESCRIPTION	BOX QTY.	UNIT QTY.	BOX WEIGHT
5000630-PCK-B	CAM, 10D, CFRP, 180-PACK INST.	1	180	32.6 LBS

