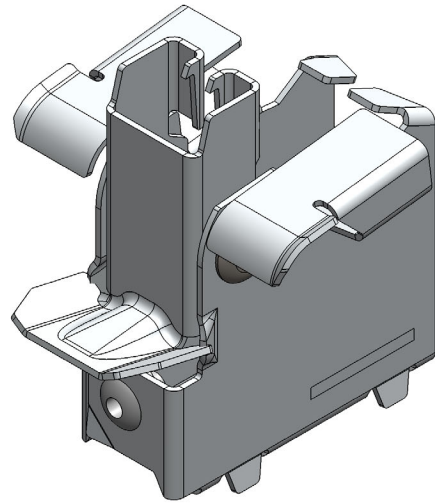
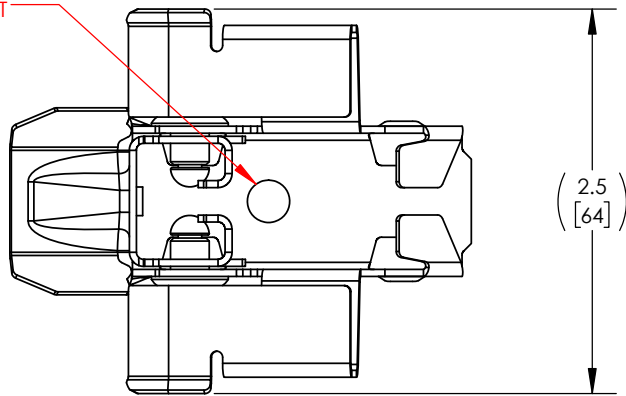


CAM, 5D, CFRP

PART NUMBER	DESCRIPTION
5000636	CAM, 5D, CFRP

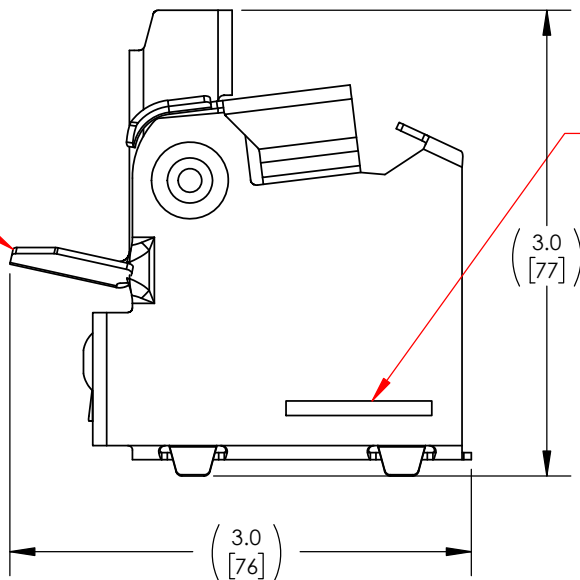


MODULE CONNECTOR AND BASE
ATTACHMENT HOLE FOR M6 BOLT

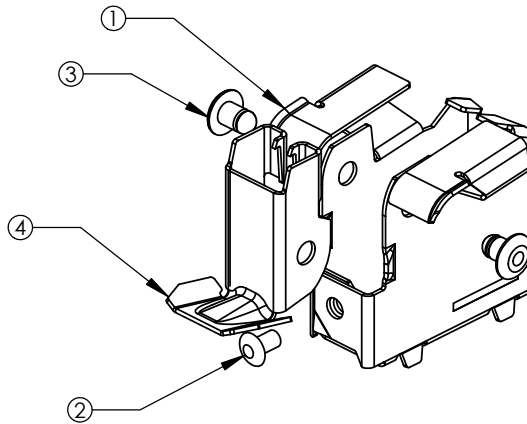


CAM SEAT

PART NUMBER AND REVISION CODE

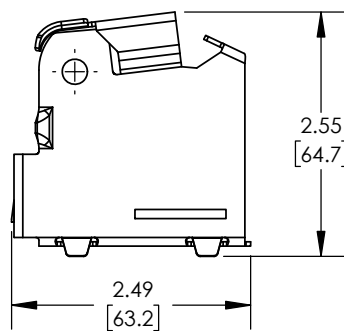
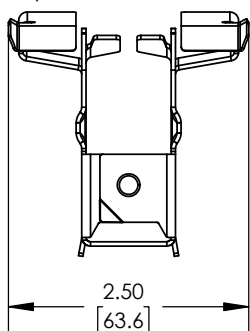


CAM, 5D, CFRP

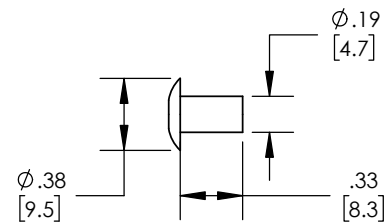


ITEM NO.	DESCRIPTION
1	CAM BRKT, 5D, CFRP
2	RIVET, 3/16", .020-.125 GRIP, ST
3	RIVET, 1/4"x .25"L, .020-.125 GRIP, ST
4	CAM SEAT, CFRP

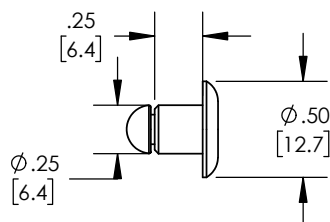
1) CAM BRKT, 5D, CFRP



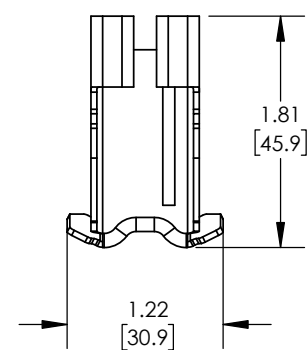
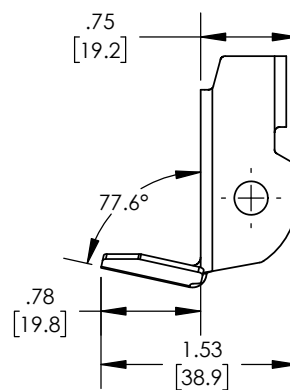
2) RIVET, 3/16", .020-.125 GRIP, ST



3) RIVET, 1/4"x .25L, .020-.125 GRIP, ST



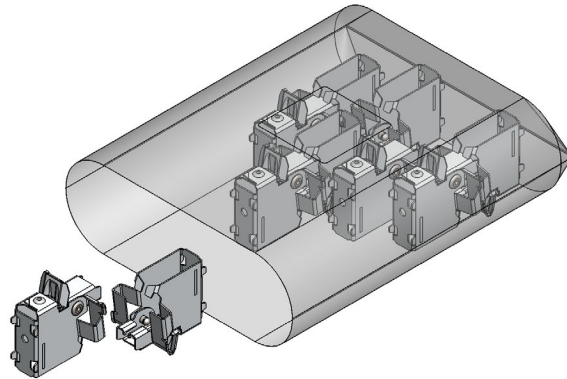
4) CAM SEAT, CFRP



MATERIAL	STEEL
FINISH	ZINC-ALUMINUM-MAGNESIUM, MILL, ZINC

CAM, 5D, CFRP

PACKAGING INFORMATION				
PART NUMBER	DESCRIPTION	BAG QTY.	UNIT QTY.	BAG WEIGHT
5000636-PCK-A	CAM, 5D, CFRP, 10-PACK INST.	1	10	2.68 LBS



PACKAGING INFORMATION				
PART NUMBER	DESCRIPTION	BOX QTY.	UNIT QTY.	BOX WEIGHT
5000636-PCK-B	CAM, 5D, CFRP, 110-PACK INST.	1	110	29.9 LBS

