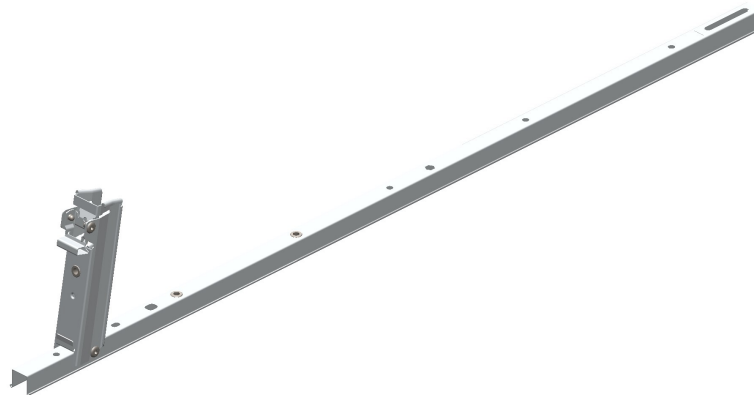


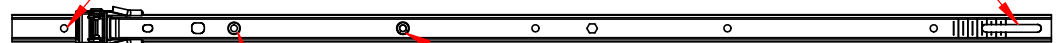
MODULE CONNECTOR, 5 DEGREE, CFRP

PART NUMBER	DESCRIPTION	DIM "A" inch[mm]	WEIGHT lb/kg	MODULE WIDTH mm
500064401	MODULE CONNECTOR, 1030, 5D, CFRP	43.31 [1100.0]	1.556/0.706	990 - 1030
500064402	MODULE CONNECTOR, 1070, 5D, CFRP	44.88 [1140.0]	1.592/0.722	1031 - 1070
500064403	MODULE CONNECTOR, 1110, 5D, CFRP	46.46 [1180.0]	1.628/0.738	1071 - 1110
500064404	MODULE CONNECTOR, 1150, 5D, CFRP	48.03 [1220.0]	1.664/0.755	1111 - 1150
500064408	MODULE CONNECTOR, 1310, 5D, CFRP	54.33 [1380.0]	1.808/0.820	1270 - 1310



CAM BRACKET AND BASE
ATTACHMENT SLOT FOR M6 BOLT

BASE ATTACHMENT
HOLE FOR M6 BOLT



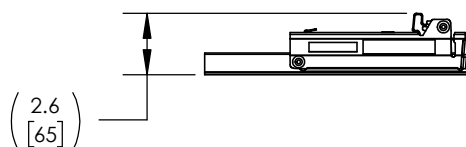
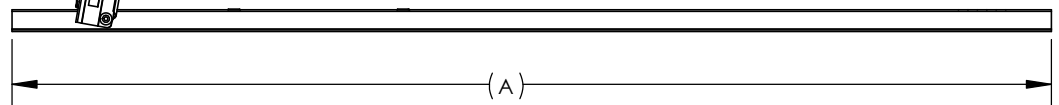
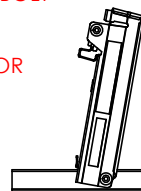
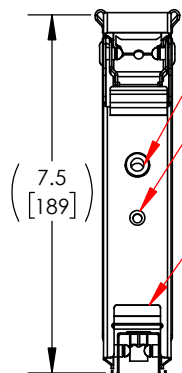
OPTIONAL RAIL ATTACHMENT
RIVETNUTS FOR M6 BOLT

RAIL ATTACHMENT
RIVETNUT FOR M6 BOLT

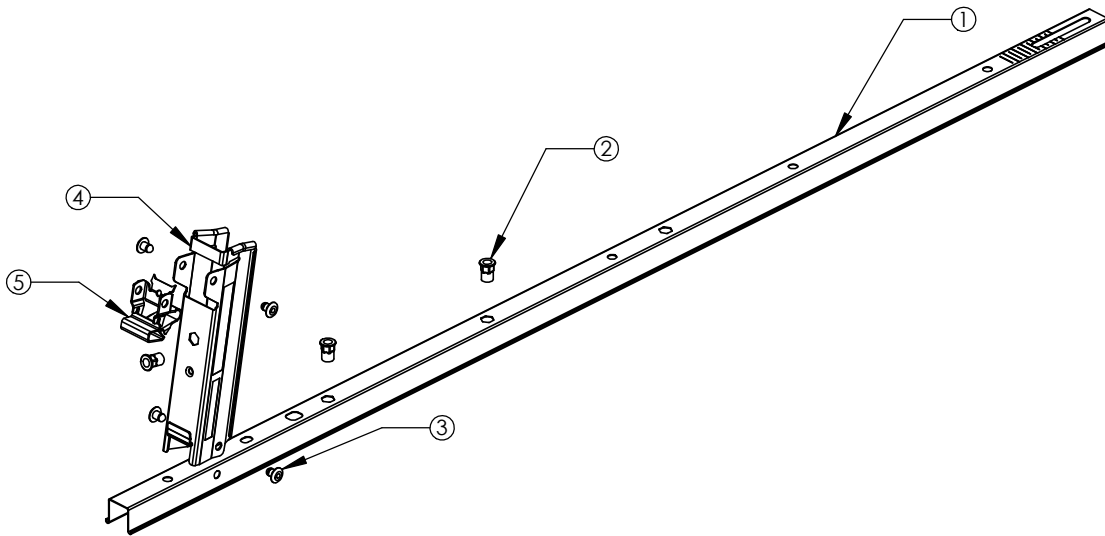
DEFLECTOR
ATTACHMENT
RIVETNUT FOR M6
BOLT

OPTIMIZER BRACKET
ATTACHMENT
FOR M6 BOLT

DEFLECTOR
SEAT

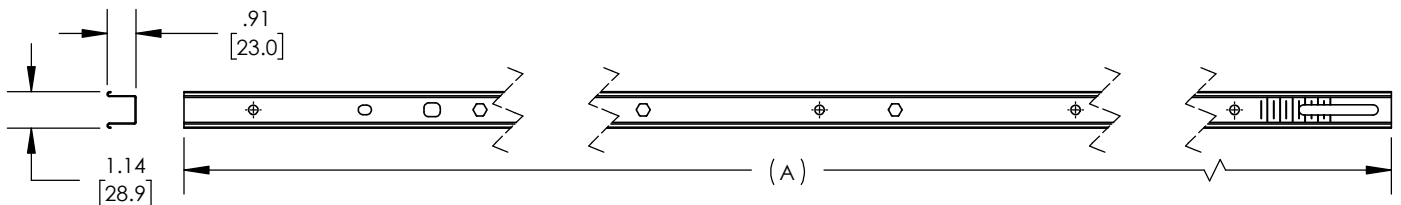


MODULE CONNECTOR, 5 DEGREE, CFRP

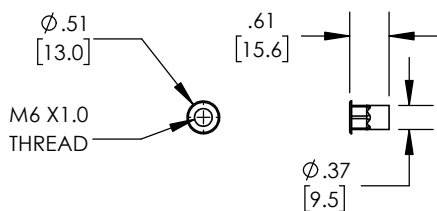


ITEM NO.	DESCRIPTION
1	MODULE CONNECTOR, CFR
2	RIVETNUT, HEX, M6X1.0, ST
3	RIVET, 1/4"x .25"L, .020-.125 GRIP, ST
4	TILT ARM, 5D, CFRP
5	LOCK CLAW, CFRP

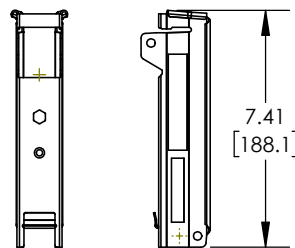
1) MODULE CONNECTOR, CFR



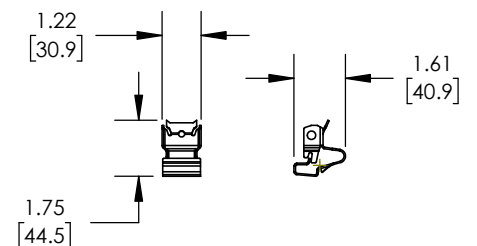
2) RIVETNUT, HEX, M6X1.0, ST



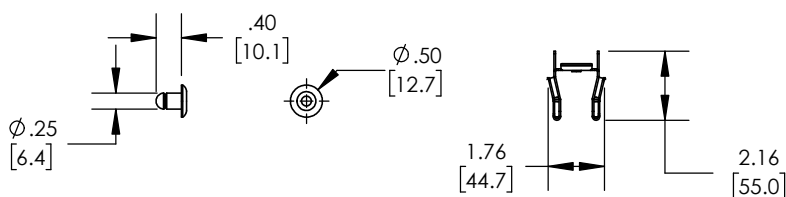
4) TILT ARM, 5D, CFRP



5) LOCK CLAW, CFRP



3) RIVET, 1/4"x .25"L, .020-.125 GRIP, ST



MATERIAL	STEEL
FINISH	ZINC-ALUMINUM-MAGNESIUM, ZINC,

MODULE CONNECTOR, 5 DEGREE, CFRP

PACKAGING INFORMATION

PART NUMBER	DESCRIPTION	DIM (A) IN INCHES	UNIT QTY.	PALLET WEIGHT
70-00369	MODULE CONNECTOR, 1030, 5D, CFRP (ASSEMBLY)	52.0	450	775 LBS
70-00370	MODULE CONNECTOR, 1070, 5D, CFRP (ASSEMBLY)	52.0	450	791 LBS
70-00371	MODULE CONNECTOR, 1110, 5D, CFRP (ASSEMBLY)	52.0	450	808 LBS
70-00372	MODULE CONNECTOR, 1150, 5D, CFRP (ASSEMBLY)	52.0	450	824 LBS
70-00373	MODULE CONNECTOR, 1310, 5D, CFRP (ASSEMBLY)	58.5	450	889 LBS

