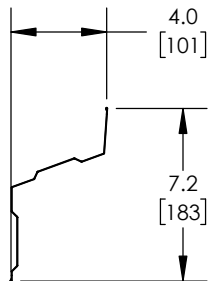
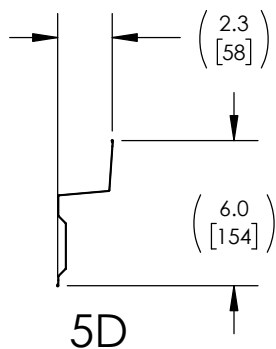


## DEFLECTOR, 5D AND 10D, CFR

PART NUMBER	DESCRIPTION	DIM "A" IN[MM]	WEIGHT LB/KG
200088701	DEFLECTOR, 10D, 1700, CFR	68.2[1732]	3.03/1.38
200088702	DEFLECTOR, 10D, 2025, CFR	81.0[2056]	3.61/1.64
200088703	DEFLECTOR, 10D, 2100, CFR	83.9[2132]	3.74/1.70
200088704	DEFLECTOR, 10D, 2200, CFR	87.9[2232]	3.92/1.78
200088705	DEFLECTOR, 10D, 2300, CFR	91.8[2332]	4.10/1.84
200088706	DEFLECTOR, 10D, 2400, CFR	95.7[2432]	4.28/1.94
200088707	DEFLECTOR, 10D, 2500, CFR	99.7[2532]	4.46/2.02
200089901	DEFLECTOR, 5D, 1700, CFR	68.2[1732]	2.44/1.11
200089902	DEFLECTOR, 5D, 2025, CFR	81.0[2056]	2.96/1.34
200089903	DEFLECTOR, 5D, 2100, CFR	83.9[2132]	3.02/1.37
200089904	DEFLECTOR, 5D, 2200, CFR	87.9[2232]	3.16/1.43
200089905	DEFLECTOR, 5D, 2300, CFR	91.8[2332]	3.31/1.50
200089906	DEFLECTOR, 5D, 2400, CFR	95.7[2432]	3.45/1.57
200089907	DEFLECTOR, 5D, 2500, CFR	99.7[2532]	3.60/1.63



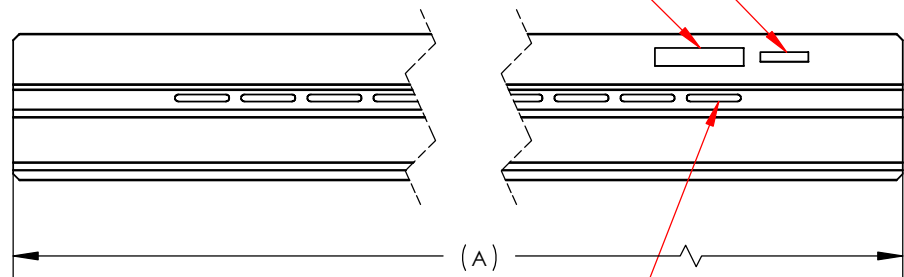
10D



5D

VENDOR CODE: DATE CODE, PART NUMBER, AND REVISION CODE

PANELCLAW LOGO



14X SLOT FOR M6 BOLT

MATERIAL	STEEL
FINISH	ZINC-ALUMINUM-MAGNESIUM

## DEFLECTOR, 5D AND 10D, CFR

### PACKAGING INFORMATION

PART NUMBER	DESCRIPTION	PALLET QTY.	UNIT QTY.	DIM "B" IN[MM]	DIM "C" IN[MM]	DIM "D" IN[MM]	PALLET WEIGHT	DOUBLE STACKED WEIGHT
200088701-PCK	DEFLECTOR, 10D, 1700, CFR, 350-PACK INST.	350	350	72.0[1829]	20.2 [512.8]	40.4 [1025.7]	1121 LBS	2252 LBS
200088702-PCK	DEFLECTOR, 10D, 2025, CFR, 350-PACK INST.	350	350	81.0[2184]	20.2 [512.8]	40.4 [1025.7]	1332 LBS	2672 LBS
200088703-PCK	DEFLECTOR, 10D, 2100, CFR, 350-PACK INST.	350	350	89.0[2261]	20.2 [512.8]	40.4 [1025.7]	1380 LBS	2770 LBS
200088704-PCK	DEFLECTOR, 10D, 2200, CFR, 350-PACK INST.	350	350	93.0[2362]	20.2 [512.8]	40.4 [1025.7]	1445 LBS	2900 LBS
200088705-PCK	DEFLECTOR, 10D, 2300, CFR, 350-PACK INST.	350	350	97.0[2464]	20.2 [512.8]	40.4 [1025.7]	1509 LBS	3028 LBS
200088706-PCK	DEFLECTOR, 10D, 2400, CFR, 350-PACK INST.	350	350	101.0[2565]	20.2 [512.8]	40.4 [1025.7]	1575 LBS	3160 LBS
200088707-PCK	DEFLECTOR, 10D, 2500, CFR, 350-PACK INST.	350	350	105.0[2667]	20.2 [512.8]	40.4 [1025.7]	1639 LBS	3288 LBS
200089901-PCK	DEFLECTOR, 5D, 1700, CFR, 350-PACK INST.	350	350	72.0[1829]	18.6 [471.4]	37.1 [942.8]	918 LBS	1846 LBS
200089902-PCK	DEFLECTOR, 5D, 2025, CFR, 350-PACK INST.	350	350	81.0[2184]	18.6 [471.4]	37.1 [942.8]	1104 LBS	2218 LBS
200089903-PCK	DEFLECTOR, 5D, 2100, CFR, 350-PACK INST.	350	350	89.0[2261]	18.6 [471.4]	37.1 [942.8]	1128 LBS	2266 LBS
200089904-PCK	DEFLECTOR, 5D, 2200, CFR, 350-PACK INST.	350	350	93.0[2362]	18.6 [471.4]	37.1 [942.8]	1183 LBS	2376 LBS
200089905-PCK	DEFLECTOR, 5D, 2300, CFR, 350-PACK INST.	350	350	97.0[2464]	18.6 [471.4]	37.1 [942.8]	1233 LBS	2476 LBS
200089906-PCK	DEFLECTOR, 5D, 2400, CFR, 350-PACK INST.	350	350	101.0[2565]	18.6 [471.4]	37.1 [942.8]	1285 LBS	2580 LBS
200089907-PCK	DEFLECTOR, 5D, 2500, CFR, 350-PACK INST.	350	350	105.0[2667]	18.6 [471.4]	37.1 [942.8]	1338 LBS	2686 LBS

