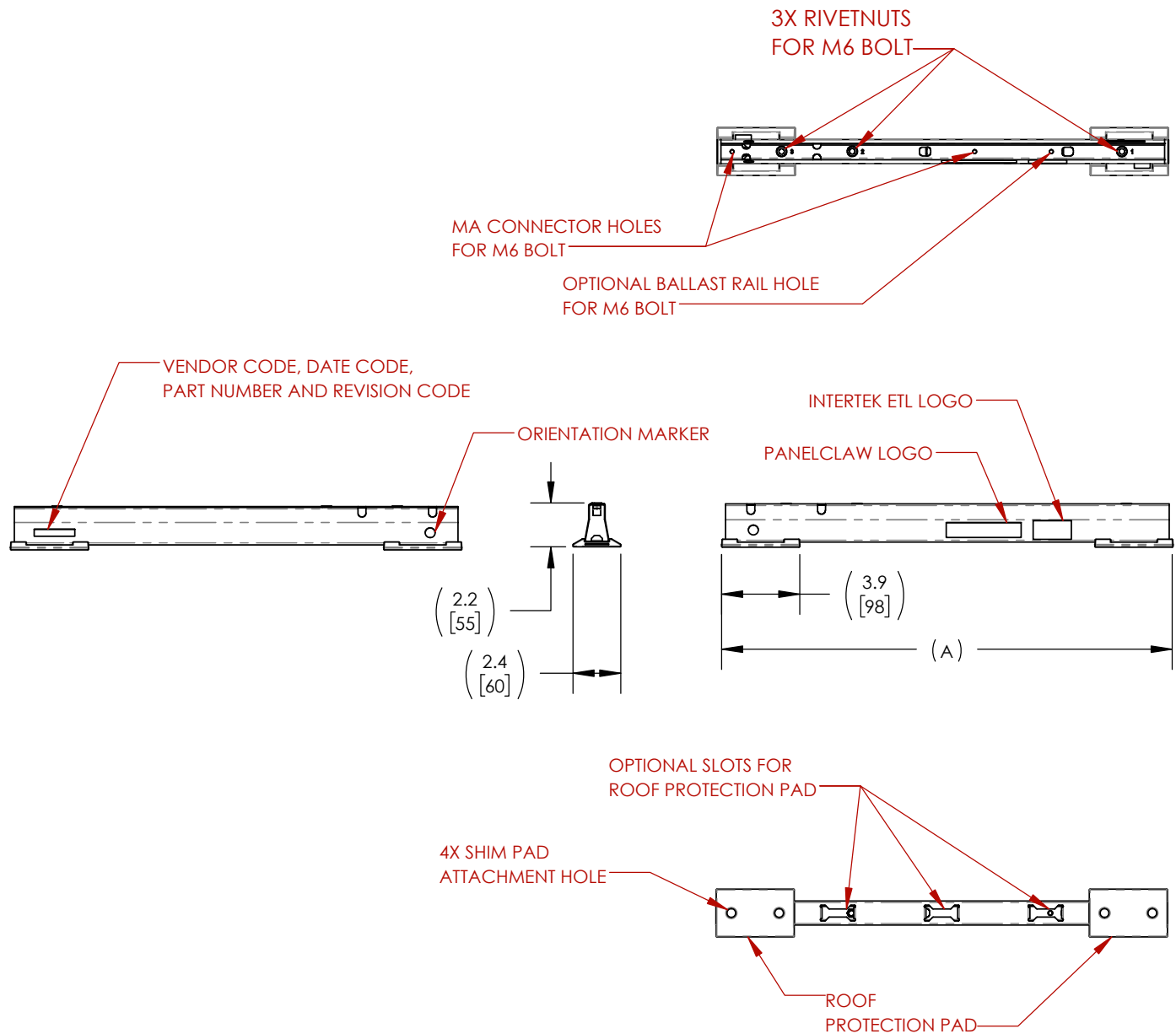
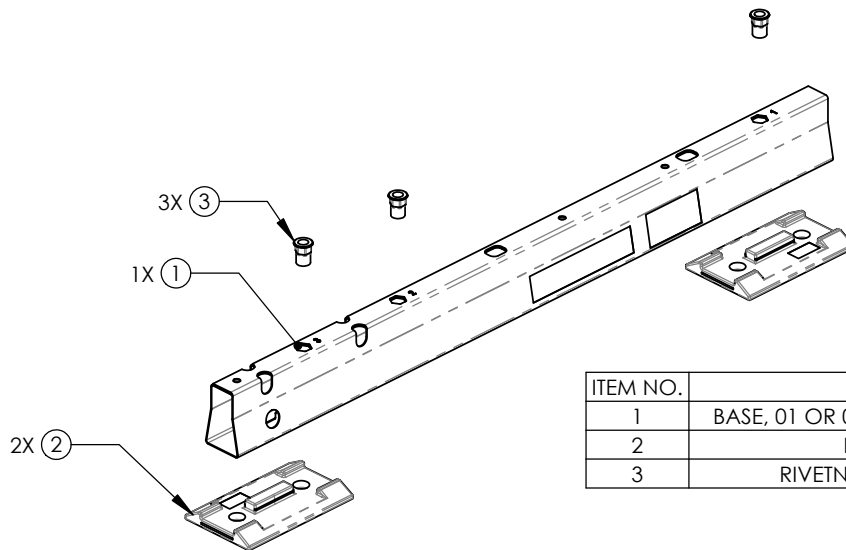


BASE, CFR

PART NUMBER	DESCRIPTION	DIM "A" inch [mm]
500050201	BASE, 01, CFR	13.9 [353]
500050202	BASE, 02, CFR	16.4 [417]
500050203	BASE, 03, CFR	22.3 [565]

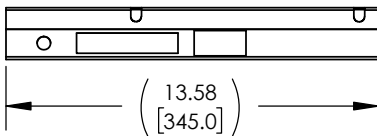


BASE, CFR

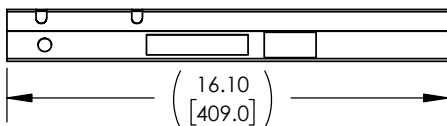


ITEM NO.	DESCRIPTION
1	BASE, 01 OR 02 OR 03, CFR (FABRICATED)
2	PAD, BASE, CFR
3	RIVETNUT, HEX, M6X1.0 ST ZN

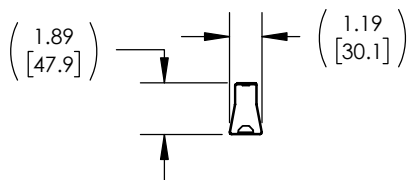
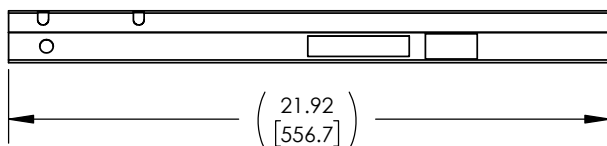
1) BASE, 01, CFR (FABRICATED)



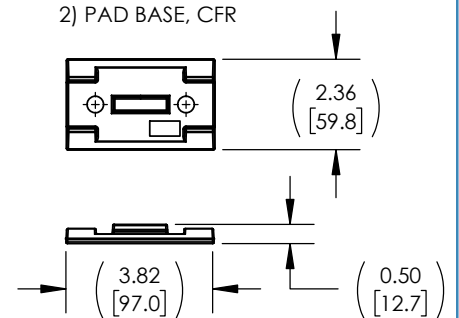
1) BASE, 02, CFR (FABRICATED)



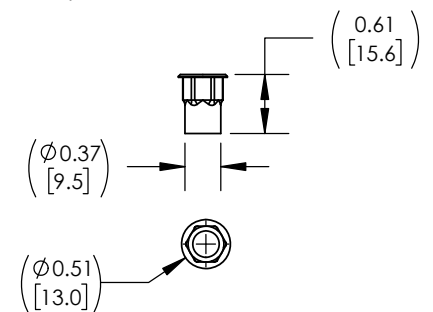
1) BASE, 03, CFR (FABRICATED)



2) PAD BASE, CFR



3) RIVETNUT, HEX, M6X1.0 ST ZN



MATERIAL	STEEL, SARLINK TPV, PERMAPRENE
FINISH	ZINC-ALUMINUM-MAGNESIUM, DELTA PROTEKT MKS SILVER, ZINC-NICKEL

BASE, CFR

PACKAGING INFORMATION					
PART NUMBER	DESCRIPTION	DIM "B" INCH [MM]	PALLET QTY.	UNIT QTY.	PALLET WEIGHT
500050201-PCK	BASE, 01, CFR 1000-PACK INST.	33.58 [853.0]	1000	1000	898 LBS
500050202-PCK	BASE, 02, CFR 880-PACK INST.	33.58 [853.0]	880	880	897 LBS
500050203-PCK	BASE, 03, CFR 840-PACK INST.	39.01 [990.7]	840	840	1084 LBS

